

The Flinders



The Flinders is a ranch style with a difference!

With its wrap around verandah and high ridge lines this home exhibits a panoramic style that portrays comfort and serenity. Once again, Profile Homes creates an individual street appeal with a unique design and impeccable quality.

Apart from space and light filled rooms filtering through large bay windows, this home has unusual features such as two separate entertaining areas. Entertainment becomes easy when the Rumpus room can be enjoyed by the more mature, whilst the children can have their own space towards the other end of the house in their own entertainment room.

Another feature to this home is the beauty of a courtyard viewed through the Ensuite and Rumpus Room, boasting a magical sense of tranquillity.

The Flinders truly makes a world of difference!

Profile HOMES (VIC)
Simply the best!

This plan is copyright and may not be reproduced without the written consent of Profile Design & Construct Pty Ltd

1/15 Assembly Drive, Tullamarine 3043

Telephone: 9338 0922

Facsimile: 9330 2585

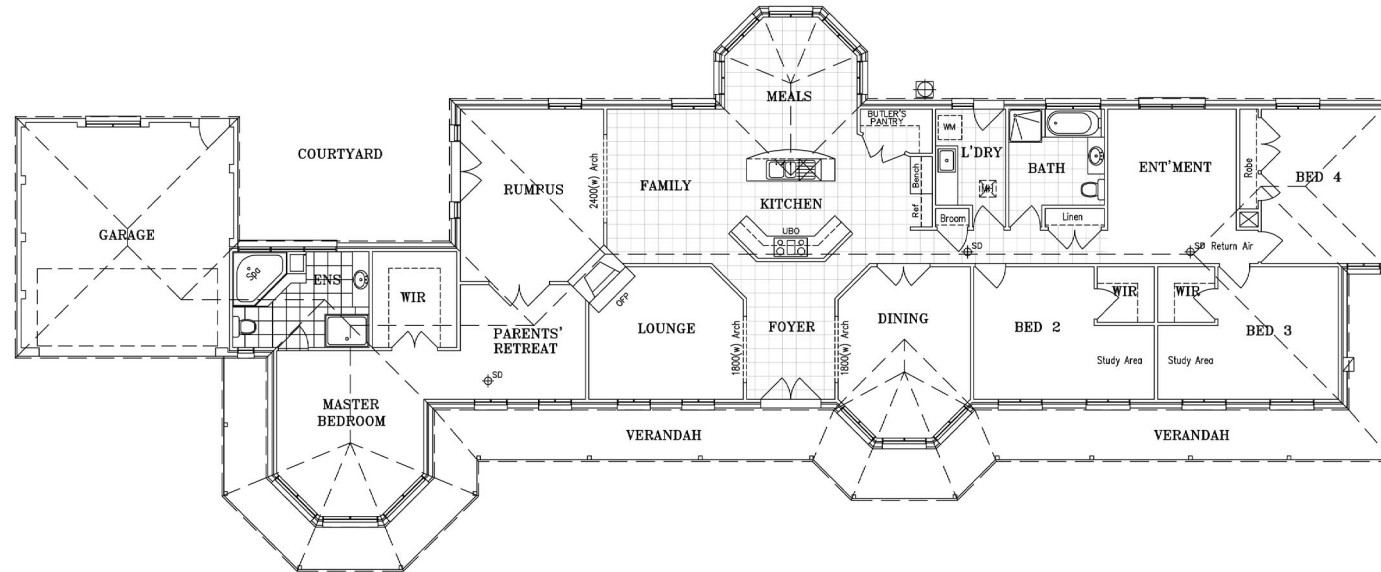
Email: profile@profilehomes.com.au

Visit our web site: www.profilehomes.com.au

The Flinders 27.88sqsq 4 Bedrooms

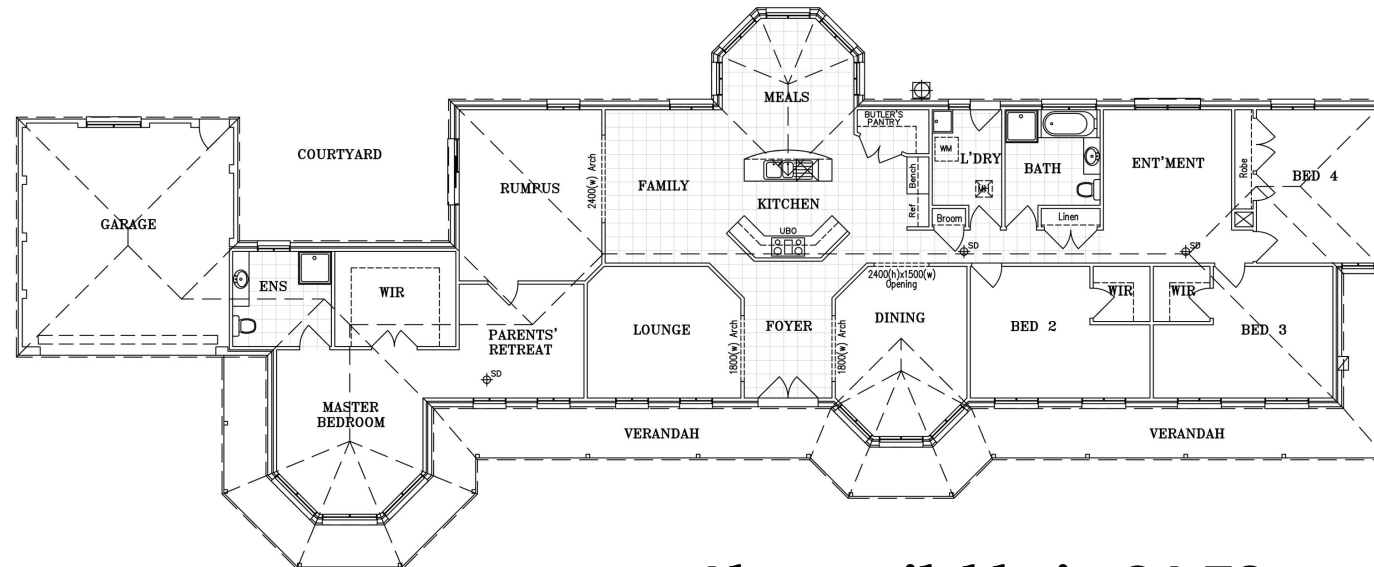
FLOOR PLAN

Display



AREAS:	
RESIDENCE:	259.09m ² 27.88 SQS
VERANDAH:	55.71m ²
GARAGE:	39.73m ²
TOTAL:	354.53m ² 38.16 SQS

Standard



**Also available in 24.78sqsq - 4 Bedrooms
and 21sqsq - 3 Bedrooms**

Profile HOMES (VIC)
Simply the best!

This plan is copyright and may not be reproduced without the written consent of Profile Design & Construct Pty Ltd